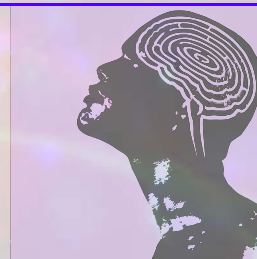

Behavioral Neuroscience Symposium

Tuesday, September 29, 2009 • 9:30am–5:30pm

Gladstone Institute of Neurological Disease

Mission Bay, San Francisco



Program

- 9:30–10:00am Gary Arendash, PhD, University of South Florida
The Florida Alzheimer's Disease Research Center
Using Mouse Models of Alzheimer's Disease for Development of Disease-modifying Therapeutics: Is This Translational Bridge Being Crossed?
- 10:05–10:35am Bruce Miller, MD, Memory and Aging Center
University of California, San Francisco, School of Medicine
Frontotemporal Dementia
- 10:35–11:00am *Coffee Break*
- 11:00–11:30am Marie-Francoise Chesselet, MD, PhD, Reed Neurological Research Center
University of California, Los Angeles
Expanding the Repertoire of Endpoint Measures for Drug Testing in Mouse Models of Parkinson's and Huntington's Diseases
- 11:35–12:05pm Lennart Mucke, MD, Gladstone Institute of Neurological Disease
University of California, San Francisco
Modeling Human Dementias in Mice: Are We Similar Enough?
- 12:05–1:30pm *Lunch Break*
- 1:30–2:00pm Jacqueline Crawley, PhD, National Institute of Mental Health
Behavioral Phenotyping Strategies for Mouse Models of Autism
- 2:05–2:35pm Michela Gallagher, PhD, Johns Hopkins University
Neurocognitive Aging in the Medial Temporal Lobe in Animal Models and Making the Leap to Man
- 2:40–3:05pm *Coffee Break*
- 3:05–3:35pm Alcino Silva, PhD, University of California, Los Angeles
Molecular and Cellular Mechanisms Underlying the Learning Disabilities Associated with Disruptions of Ras/MAPK Signaling: From the Lab to the Clinic
- 3:40–4:10pm Laurence Tecott, MD, PhD, University of California, San Francisco
Novel Features of Behavioral Organization Revealed by Quantitative Assessment of Home Cage Behavior
- 4:10–5:30pm *Reception in Gladstone Lobby*
-

This symposium sponsored in part by Elan Pharmaceuticals, Genentech, Noldus Information Technology, and the Gladstone Institute of Neurological Disease
