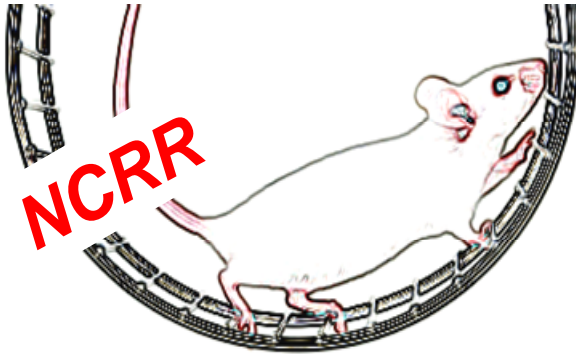


Neurobehavioral Core for Rehabilitation Research



❖ Seminar

Sergio Baranzini, PhD

*Associate Professor
Department of Neurology
UCSF*

*The role of genetics in MS
susceptibility and pathogenesis*

Joanne M. Wagner, PT, PhD

*Assistant Professor
Department of Physical Therapy and Athletic Training,
Doisy College of Health Sciences, Saint Louis University*

*Factors contributing to the loss of mobility in
adults with multiple sclerosis*

Thursday, October 29th, 2009

12:15 pm – 2:00 pm

Room HSW 302, Parnassus Campus

For more information contact Sandra Canchola:

cancholas@ptrehab.ucsf.edu